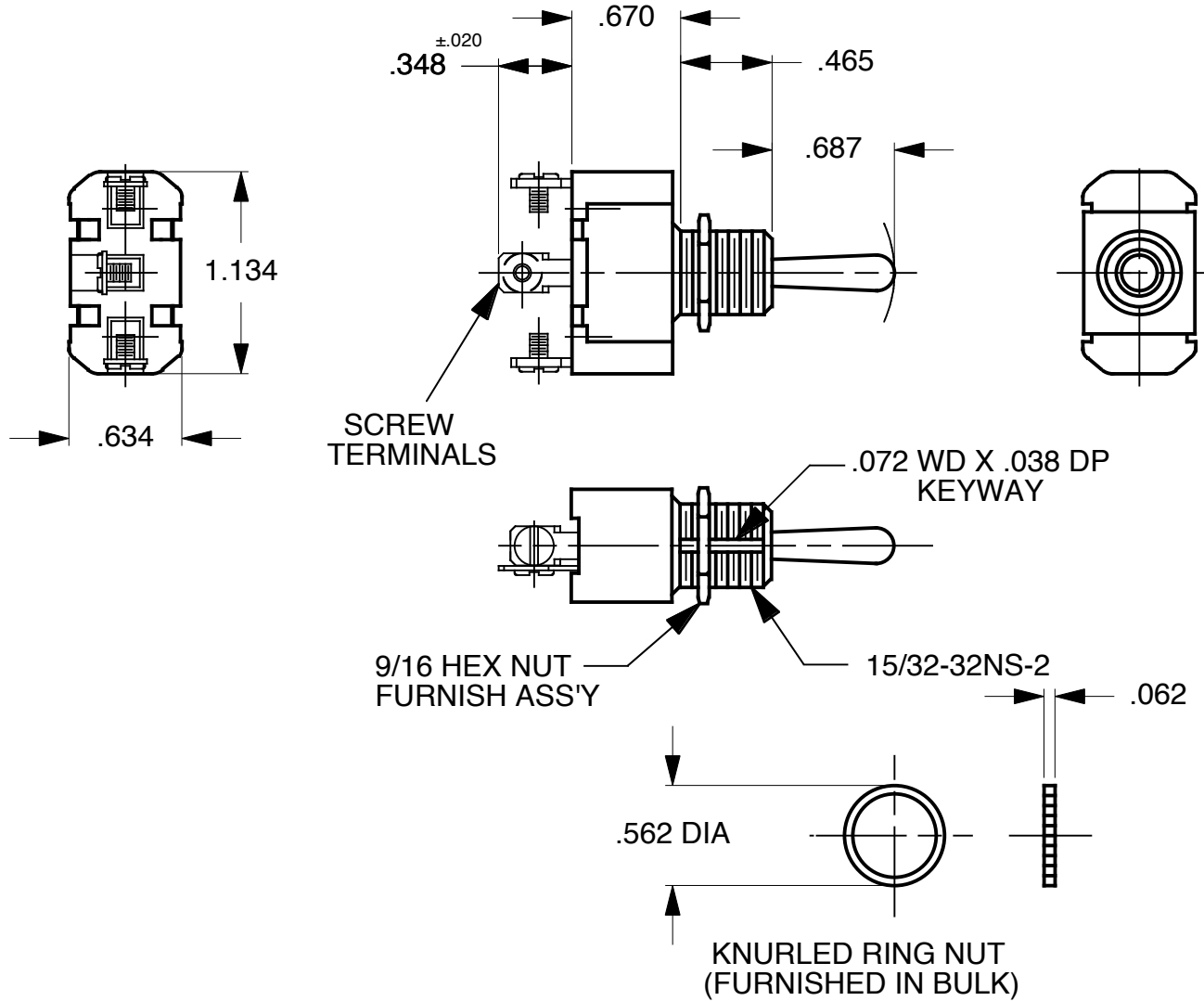


DO NOT SCALE DRAWING WORK TO FIGURES

DWG NO.		6FC58-73	REV.
LET	REVISIONS	DATE	



RATINGS: UL & CSA

10A 250VAC

15A 125VAC

3/4HP, 120-240AC

OPERATES:

(POSITION OF TOGGLE)

UP	CENTER	DOWN
ON	OFF	(ON)

KNOTES:

1- KEYWAY INDICATES DOWN POSITION.

2- TOGGLE, BUSHING, RING NUT AND HEX.NUT ARE NICKEL PLATED

DIMENSIONS SUBJECT TO CHANGE WITHOUT NOTICE

FINISH

CARLINGSWITCH, INC.  
PLAINVILLE, CT

**PROPRIETARY NOTE:**

NOTICE TO ALL PERSONS RECEIVING THIS DRAWING. THIS DOCUMENT IS THE PROPERTY OF CARLINGSWITCH, INC. AND IS NOT TO BE DISCLOSED, REPRODUCED IN WHOLE OR IN PART OR USED FOR MANUFACTURING PURPOSES BY ANYONE WITHOUT THE CONSENT OF CARLINGSWITCH, INC.

UNSPECIFIED TOLERANCES

FRAC.  $\pm 1/64$  X.XXX  $\pm .015$   
ANGLES  $\pm 1^\circ$

PROJECTIONS



DIMENSIONS  
IN [mm]

TOOL NO.

DR BY  
**F.BELAND**

DATE  
**5-18-94**

CHK BY

DATE

APPD BY

DATE

TITLE

**TOGGLE SWITCH**

SIZE

**A**

DWG NO.

**6FC58-73**

REV.

USED ON

SCALE:

**NONE**

SHT

OF

**1 1**